

FSUIPC7

Installation and Registration Guide

**Flight Simulator Universal Inter-Process Communication
by John Dowson, © January 2023**

An application interfacing module for MSFS

Support Forum: [Pete Dowson's Support Forum](#)



For version 7.3.16 and later of FSUIPC7 only

Note: All our Windows based software is always available in the latest versions from from the [Download Links](#) subforum in the Support Forum (link above), and also from

www.fsuipc.com

Package Contents

As well as the document you are now reading, the FSUIPC package contains the FSUIPC installer “**Install FSUIPC7.exe**” and a changes text (.txt) file. This text file contains details of recent changes. Please see the **FSUIPC7 History** document for a complete list of changes since FSUIPC5. A **README.txt** file is also provided, also containing basic usage instructions, missing functionality, limitations and issues. Please read this file!

Running The Installer

The Installer itself should hopefully be self-explanatory. To run the installer, double-click it. You will then have to confirm to Windows to allow the installer to make the necessary changes to your system.

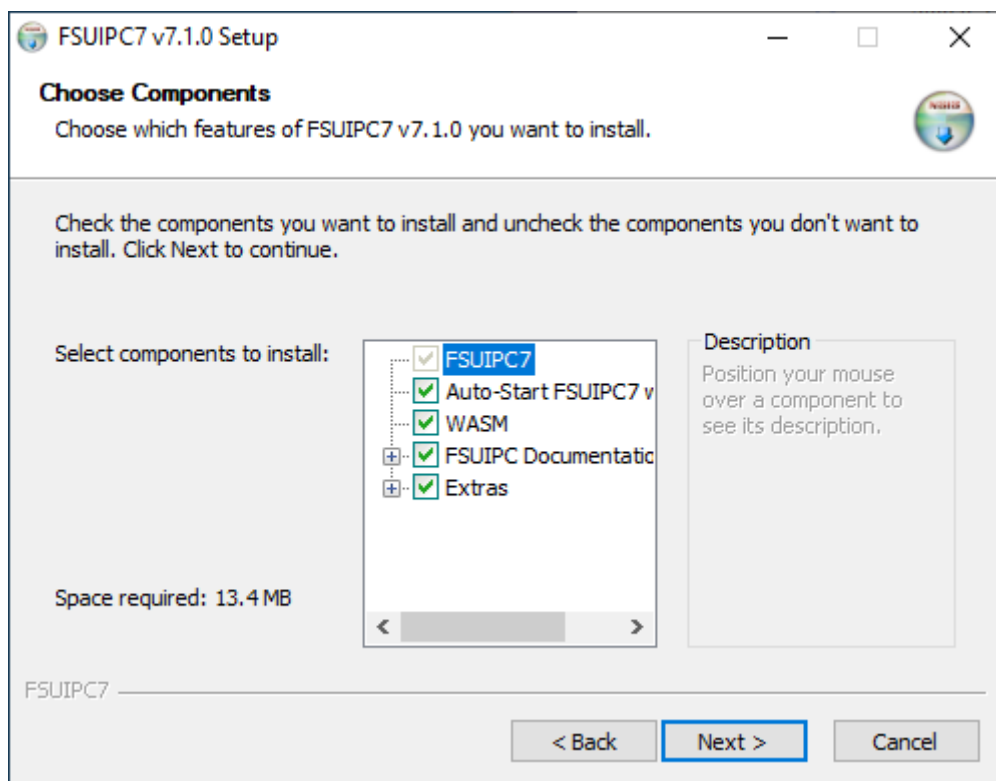
Please make sure that FSUIPC7 is not already running when you run the installer – if FSUIPC7 is running when you run the installer, then this will be detected and the installer will abort.

FSUIPC7 already installed

If you already have FSUIPC7 installed, then the installer will first uninstall this installation. Only the files installed by the FSUIPC7 installer will be removed, and other files (.INI and .KEY files, lua scripts, macro files, etc) will be preserved so that they can be re-used.

Installation Components

Once you have agreed to the License Agreement (EULA), you will be presented with a page that allows you to select the components that you wish to install:



The following components are available for installation:

1. FSUIPC7

This component installs the **FSUIPC7.exe** application. Selection of this component is mandatory (i.e. it cannot be deselected).

2. Auto-Start FSUIPC7 with MSFS

Selecting this component will instruct the installer to create or update the MSFS EXE.xml file to have FSUIPC7 automatically started by MSFS when ready.

3. WASM

Selecting this component will install the FSUIPC WASM module in your MSFS Community folder, to enable lvar/hvar access in FSUIPC. If you do not use lvars or hvars, you can de-select this component to not install. However, it is recommended to install anyway, as it won't be used unless you activate the functionality in FSUIPC.

4. FSUIPC Documentation

This component allows selection of the documentation that can be installed with FSUIPC. The documentation is broken down into the following categories:

User Manuals: selecting this item installs the following documents:

Installing and Registering FSUIPC.pdf (this document!)

FSUIPC User Guide.pdf

FSUIPC for Advanced Users.pdf

FSUIPC Offsets Status.pdf

FSUIPC History.pdf

Profiles in Separate Files.pdf

Offset Mapping for PMDG 737-700.pdf

Lua Documentation: selecting this installs the documentation for FSUIPC' Lua interface together with examples:

FSUIPC Lua Library.pdf

FSUIPC Lua Plug-Ins.pdf

Lua License.pdf

Lua Plugins for VRInsight Devices.pdf

LuaFileSystem.pdf

Example LUA plugins.zip

Note that all documentation will be installed in a folder called **FSUIPC7**, located under your windows **Documents** folder. If, for some reason, the documents cannot be installed in this location, a folder called **Docs** will be created under the installation directory, and the documents will be installed in this folder.

5. Extras

This component allows selection of the following additional software (freeware) to be installed:

SDK: the FSUIPC Software Development Kit. If selected, this will be installed in a sub-folder of the selected installation directory called '**SDK**'.

HiDScanner: a small program for scanning connected/registered Joysticks and other HIDs (Human Interface Devices) and providing full details as well as monitoring for changes. If selected, this will be installed in a sub-folder of the selected installation directory called '**Utils**'.

FS-Interrogate 2: a useful utility program for monitoring the FSUIPC offsets in real-time, kindly provided by Pelle F. S. Liljendal. If selected, this will be installed in a sub-folder of the selected

installation directory called '**Utils**'. A user manual '**FSI2 Manual.pdf**' will also be installed in your FSUIPC7 documents folder.

WebSocket Server: a utility that enables communication to FSUIPC7 via WebSockets, to enable browser support. Please see fsuipcwebsockets.paulhenty.com for further details. Kindly provided by Paul Henty.

MobiFlight Presets (events.txt file): this is the MobiFlight file that contains the MobiFlight presets and associated calculator code. Installing this file will allow you to assign directly to the MobiFlight presets without the need to install the MobiFlight event files (see below). This file is provided by courtesy of MobiFlight – please see the Advanced User guide for details, as well as the MobiFlight HubHop resource (<https://hubhop.mobiflight.com/>) where you are advised to register and contribute if using presets.

MobiFlight Event Files: event files for the MobiFlight WASM module. These are provided for convenience. If you are using the MobiFlight WASM module, you can use these files to make the MobiFlight events known to FSUIPC7, so that you can assign to them as you would any other events. To use these files, you must move or copy them from their installed location to the main FSUIPC7 installation folder (i.e. up one level).

H:Var files: hvar files for use with the FSUIPC WASM module. Please see the Advanced User Guide for details.

Installation Location

Once you have selected the components to install, you will be presented with a page that allows you to select the installation location, regardless of the installation method selected. If you had a previous version of FSUIPC7 installed, then this will default to the location previously used. If no previous version of FSUIPC7 was detected, then this will default to [C:\FSUIPC7](#).

Note that it is not recommended to install FSUIPC7 under your MSFS folders, and also not under the windows **Program Files** or **Program Files (x86)** folders.

Once the installation location is selected, clicking the '**Next**' button will install the components that you have selected. An uninstaller will also be created, called '**uninstallFSUIPC7.exe**' and also located in the selected FSUIPC7 installation directory. This can be used to uninstall FSUIPC7 if and when required (and is also available from the standard Windows uninstall Apps page).

Once the install process has completed, you can optionally register your copy of FSUIPC7.

FSUIPC7 Registration

Registration for FSUIPC7 is optional. If you do not have an FSUIPC7 key or if you have previously register, then you can skip this step by clicking the '**Skip**' button. Note that if you have already registered and there is a valid *FSUIPC7.key* file in your installation directory, then the fields in the registration form will be pre-populated with these values

To register your FSUIPC7 key, and additionally your WideFS registration key, enter you registration details in the dialog box provided, shown below:

FSUIPC7 v7.1.0 Setup

FSUIPC7 Registration

If you have a key for FSUIPC7, please register this key here.
Press 'Next' to skip registration. You can also skip if you have already registered.

For full FSUIPC options, enter your details EXACTLY as given to get your Registration key, then the key itself and press 'Register'.

Name:

Email or Address:

FSUIPC7 Key:

WideFS Key:

☐ Check if using a different Name or Address for WideFS

Register

FSUIPC7

< Back Skip > Cancel

If you have a WideFS registration using different details (*Name* and *Email or Address*) then check the provided check-box which will enable you to enter these different details.

It is recommended to *copy-and-paste* the details needed from the purchase email that you received from SimMarket.

Once the details have been entered, click the '**Register**' button. This will verify the entered details against the key and generate a **FSUIPC7.key** file, and install this in your installation directory.

Please note that FSUIPC6 keys (and earlier) **ARE NOT VALID for FSUIPC7**. If you already own a key for FSUIPC5 or 6, a key for FSUIPC7 can be purchased via SimMarket for a reduced fee, automatically applied when you check-out.

If you are using a time-limited license, then there is no need to **Register**. If you do, the registration will fail validation. This can be ignored and is due to the fact that the installer does not validate time-limited licenses. To add a WideFS license when using a time-limited license, you will have to add the details of the WideFS license to the FSUIPC7.key file manually.

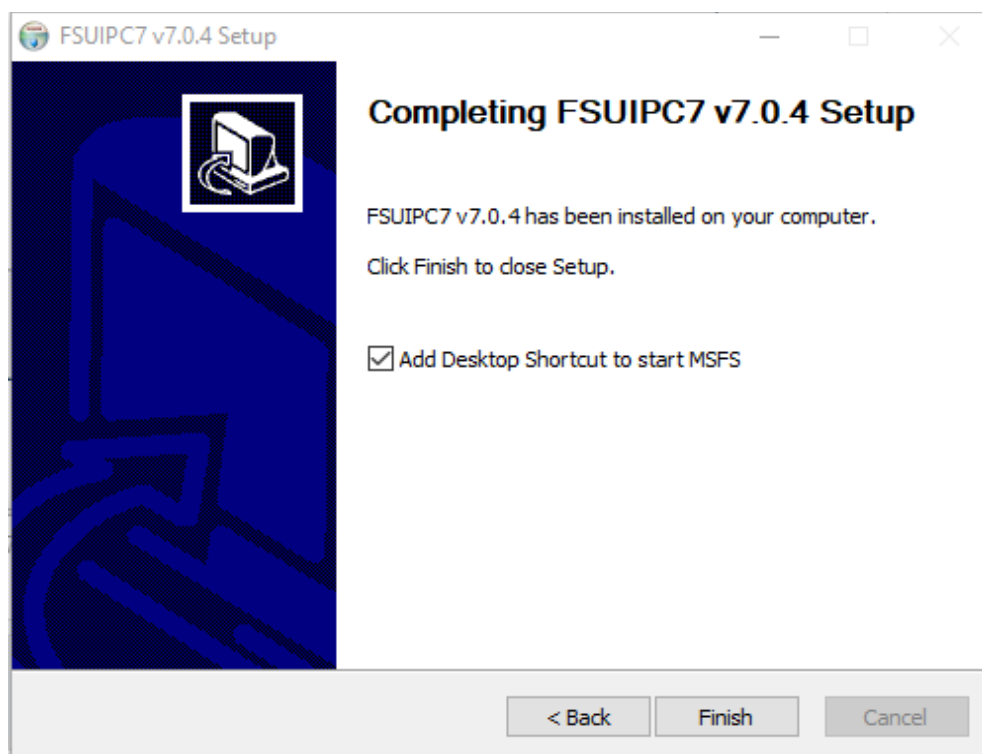
WideFS Registration

If your WideFS registration uses a different Name or Address than the FSUIPC7 registration, check the provided checkbox to enter these details.

Please note that if you are re-running the FSUIPC7 installer to register your WideFS7 key, then you also need to re-enter and re-register your FSUIPC7 key (if you have one). In fact, the text entry fields for this should be pre-populated from your existing key file. This is necessary as registration will re-generate your key file and the FSUIPC7 key will be missing if you do not include this.

Creating a Desktop Shortcut

After the registration page, you will be presented with the following page:



This contains an option, selected by default, to install a shortcut on your Desktop that will start MSFS, displaying a splash screen while MSFS is starting up. Note that this will no longer start FSUIPC7, as this is now auto-started when you start MSFS.

Note that the delay can be changed by editing the file *MSFS.bat*, located in your FSUIPC7 installation folder.

If you do not want to create such a link on your Desktop, uncheck the provided checkbox before clicking Finish to end the installation process.

Installation Problems

If you have any problems with installation, please report this on our [support forum](#). Please attach your install log (if produced), and please **DO NOT POST** your registration details. The install log is named ***InstallFSUIPC7.log*** and is located in your select installation folder, as well as in the folder where the installer is located. Before posting, PLEASE check the forum for existing posts relating to your issue, as most issues have already been reported and working solutions available.

Invalid Key Problems

Please note that registration keys are only valid from the date of purchase. If you find your registration not working or the keys rejected, please **check that your PC has the correct date set**. It often happens that

when folks install a new PC or motherboard, or even re-install Windows, the system date is left, forgotten and not corrected.

Please also note that only keys purchased for FSUIPC7 are valid for FSUIPC7. Keys for earlier versions (FSUIPC6-1) are **NOT VALID** for FSUIPC7.

If your key does NOT validate correctly, and you are sure that you have entered the details EXACTLY as specified in your SimMarket purchase email, then it could be that your Microsoft VC++ redistributables are not up to date. You can download the latest combined redistributable package from the following site:

<https://learn.microsoft.com/en-US/cpp/windows/latest-supported-vc-redist>

It is recommended to uninstall any of the 2015, 2017, 2019 or 2022 VC++ redistributables that you already have installed (using the Windows App management panel), and download and install/run both the x86 and x64 packages from that link.

For further info on this issues, please see:

<https://answers.microsoft.com/en-us/windows/forum/all/vcruntime140dll/8fe4965d-2013-49cb-816e-17cc2bb0c077>

If you are using a unicode (non-ascii) character set, then it could be that the installer cannot validate your key. You can try manually creating your key file. To do this, create a file in your FSUIPC7 installation folder called *FSUIPC7.key* and add the following contents – replacing the parts in **bold** with the correct details from your purchase email or SimMarket account:

```
[User]
Name=Name as registered
Address=Address as registered
FSUIPC=Your FSUIPC7 Key
WideFS=Your WideFS Key
```

Note that you do not need to add the WideFS line if not using WideFS. If you are using WideFS but have that registered with a different name and/or address, the format of this file is:

```
[User]
Name=Name as registered for FSUIPC7
Address=Address as registered for FSUIPC7
FSUIPC=Your FSUIPC7 Key
NameForWideFS=Name as registered for WideFS7
WideFSaddress=Address as registered for WideFS7
WideFS=Your WideFS Key
```

If you have any other problems with registration, please report this on our [support forum](#). Please **DO NOT POST** your registration details. These can be passed via a private message (PM) or email, and will be asked for via one of these methods if needed.

If using a trial license for GSUIPC7 (available from <https://forum.simflight.com/topic/92702-fsuipc7-trial-license-available-here/>), please be aware that this license will not valid correctly in the installer.

Note for Users of previous FSUIPC versions

If you have previously used FSUIPC and wish to preserve your settings, then this can be achieved by renaming your **FSUIPC*n*.ini** file (where *n* is 4, 5 or 6, depending upon version) to **FSUIPC7.ini**, and moving this file to your FSUIPC7 installation folder. You may also wish to move any auxiliary files (e.g. lua scripts, macro and mouse-macro files, etc).

It is also recommended to remove the contents of the *[General]* section of your FSUIPC7.ini if you do this, as many of these parameters are no longer valid or the default value has been changed. This will be regenerated the next time that you run FSUIPC7. Also, as the aircraft names are different in MSFS, you should remove the aircraft names from the profiles, and add the new MSFS aircraft names – best done via the UI by adding the MSFS aircraft to your existing profiles.

Note that MSFS can be quite different to FSX and P3D in terms of assignments, so many may no longer be applicable, although many standard controls are the same.

Please also note that keys for FSUIPC4, 5 or 6 are NOT VALID for FSUIPC7, and you will need to purchase a new registration if you want to use the additional facilities that registration provides.

Uninstalling FSUIPC7

If you would like to uninstall FSUIPC7, then this can be achieved by running the **uninstallFSUIPC7.exe** file that is created in your installation folder during the install process. This can also be achieved by uninstalling using the standard Windows Apps uninstall feature (which will also use the same uninstaller).

Addendum: Identifying Files in Windows Explorer

Recent versions of Windows Explorer have the nasty habit of hiding important parts of filenames from you. This is supposed to make things easier, but often it does the reverse. "Log" files are shown without the '.log' part and are just labelled "text files". Similarly, "INI" and "CFG" files are shown with that important part omitted and just labelled "configuration settings" (if you are lucky). Even the programs themselves aren't correctly shown with the .EXE or .DLL part.

You will need to fix this at some point. In Windows Explorer, go to Tools, Folder Options, View tab, and scroll down the list. Uncheck "Hide extensions for known file types". Then, when you need to look at a log or find your settings you'll be able to identify it correctly.